

PRESSURE DROP INDICATOR – MDA 60

DESCRIPTION

Pressure drop indicator MDA 60 has been developed for accurate indication of pressure drop across the filter element in compressed air system ⁽¹⁾. MDA 60 is optimised for installation on the head of the filter housing.

APPLICATIONS ⁽²⁾

- Automotive
- Electronics
- Food & Beverage
- Chemical
- Petrochemical
- Plastics
- Paint
- General industrial application



⁽¹⁾ For any other technical gas please contact us or your local dealer

⁽²⁾ MDA 60 can be used in variety of applications. For applications not listed please contact us or your local dealer.

TECHNICAL SPECIFICATION ⁽³⁾

Operating temperature	1,5 - 65 °C	35 - 149 °F
Operating pressure (Standard version)	0 - 20 bar(g)	0 - 290 psi
Mass	0,36 kg	0.79 lbs
Measuring range	0 – 2 bar(g)	0 - 29 psi
Accuracy class	2.5 (±2,5% of the span)	
Temperature effect ⁽⁴⁾	0,4% / 10K of the span	
Typical installation	Head of filter housing	
Installation screw	M5x10 DIN84	

⁽³⁾ Standard version, at 7 barg, 20°C

⁽⁴⁾ When temperature of the pressure element deviates from reference temperature (+20 °C)

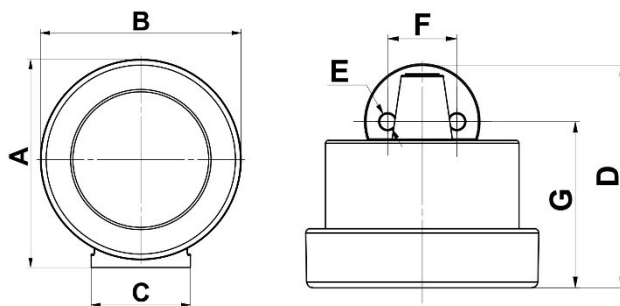
MATERIALS ⁽⁵⁾

Housing material	Aluminium alloy
Housing sealing	NBR
Outside protection	Powder paint coated (Epoxy polyester base)
Inspection glass	PMMA
Mechanism, scale	Brass, ABS
Screw	Steel - zinc plated

⁽⁵⁾ Standard version

DIMENSIONS


Dimensions	[mm]	[inch]
A	84	3.31
B	80	3.15
C	Ø40	1.57
D	78	3.07
E	Ø5,5	0.22
F	24	0.94
G	58	2.28



MAINTENANCE

Once per year make a visual check of the pressure drop indicator and make sure there is no visual damage or leakage.

INFORMATION IN THIS DOCUMENT IS SUBJECT TO CHANGE WITHOUT NOTICE

	<p>Our quality management system is certified by BUREAU VERITAS in conformity with ISO 9001:2015 Reg. number: 200285</p>	
---	--	--